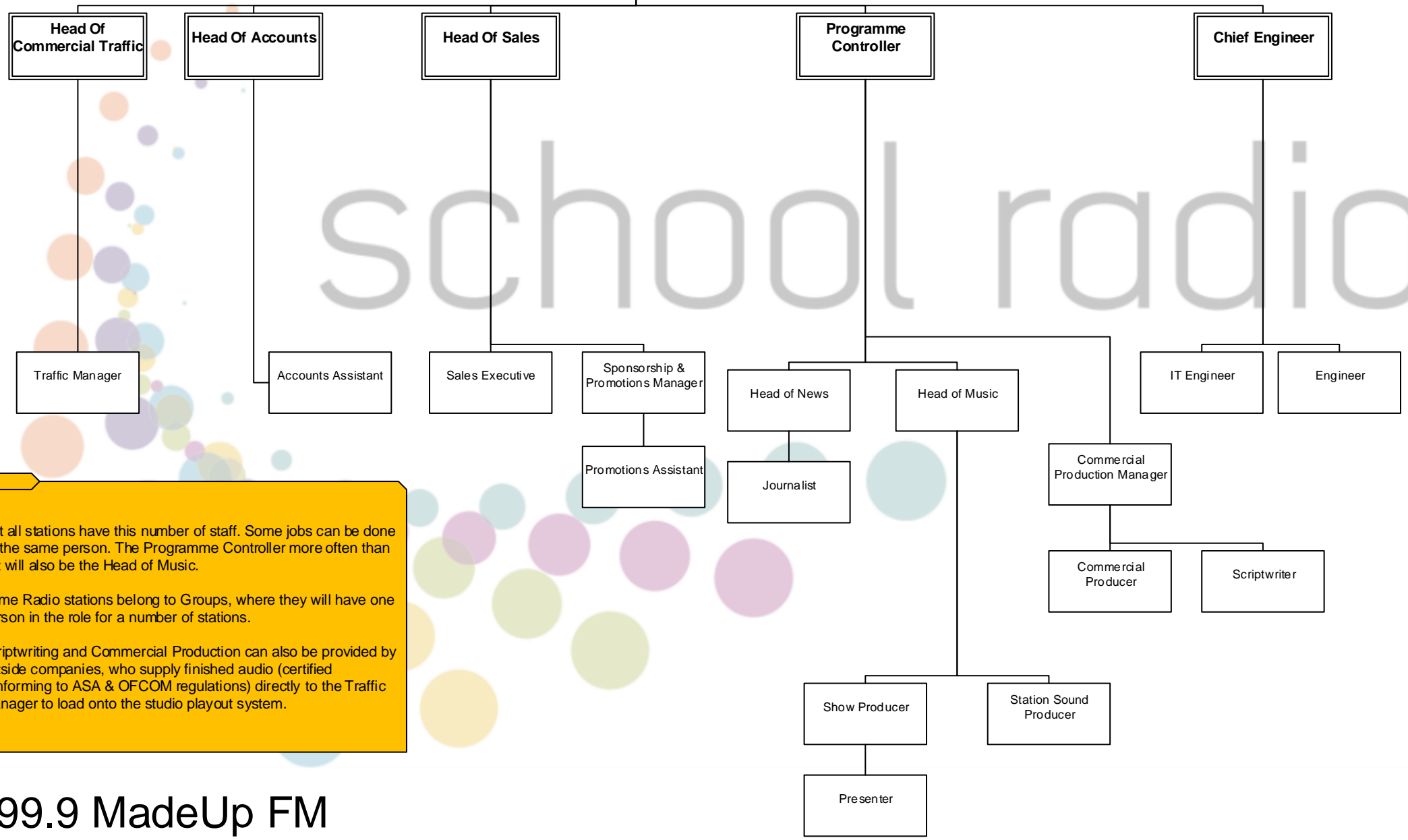


Station Manager



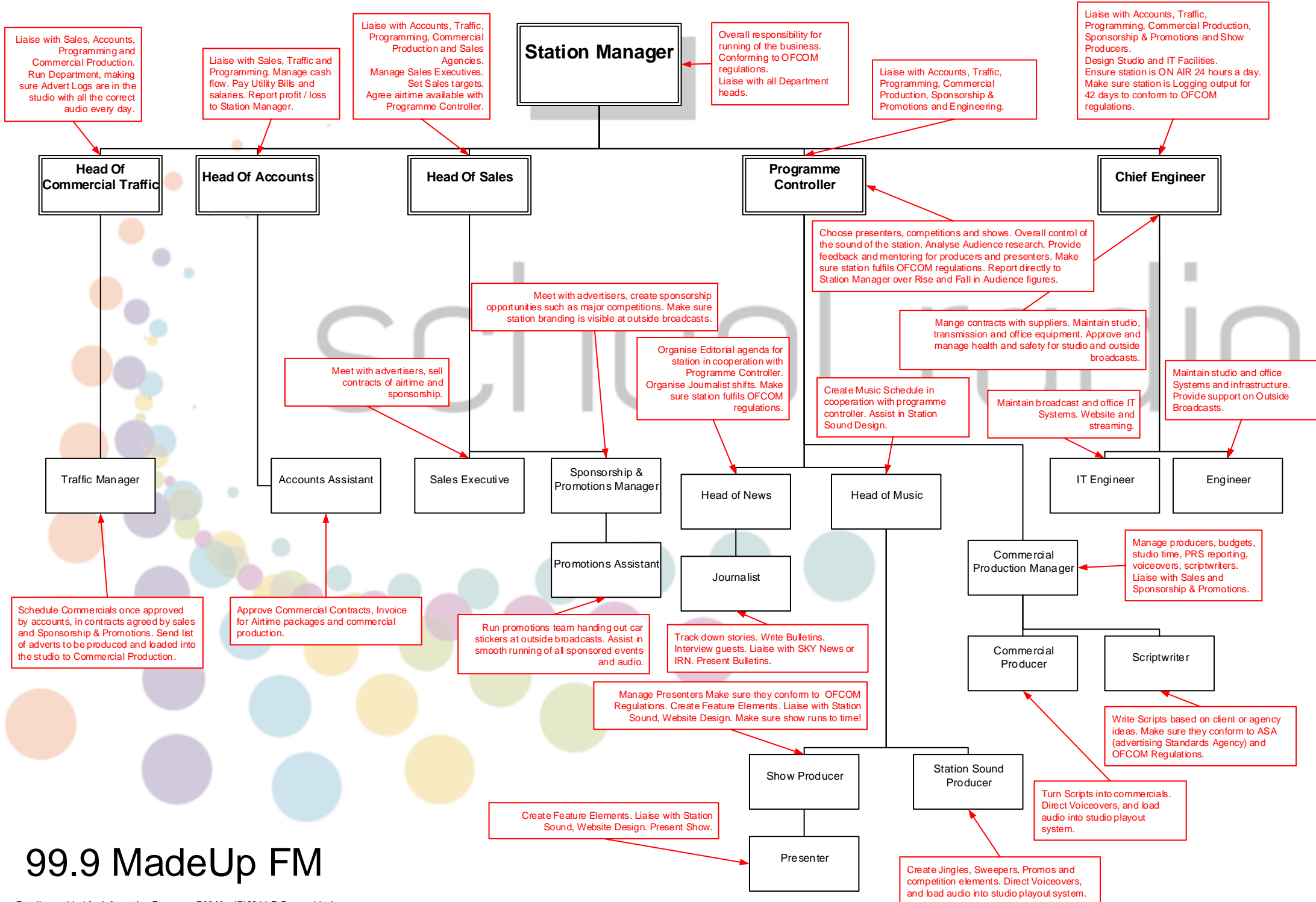
school radio

Not all stations have this number of staff. Some jobs can be done by the same person. The Programme Controller more often than not will also be the Head of Music.

Some Radio stations belong to Groups, where they will have one person in the role for a number of stations.

Scriptwriting and Commercial Production can also be provided by outside companies, who supply finished audio (certified conforming to ASA & OFCOM regulations) directly to the Traffic Manager to load onto the studio playout system.

# 99.9 MadeUp FM



# 99.9 MadeUp FM